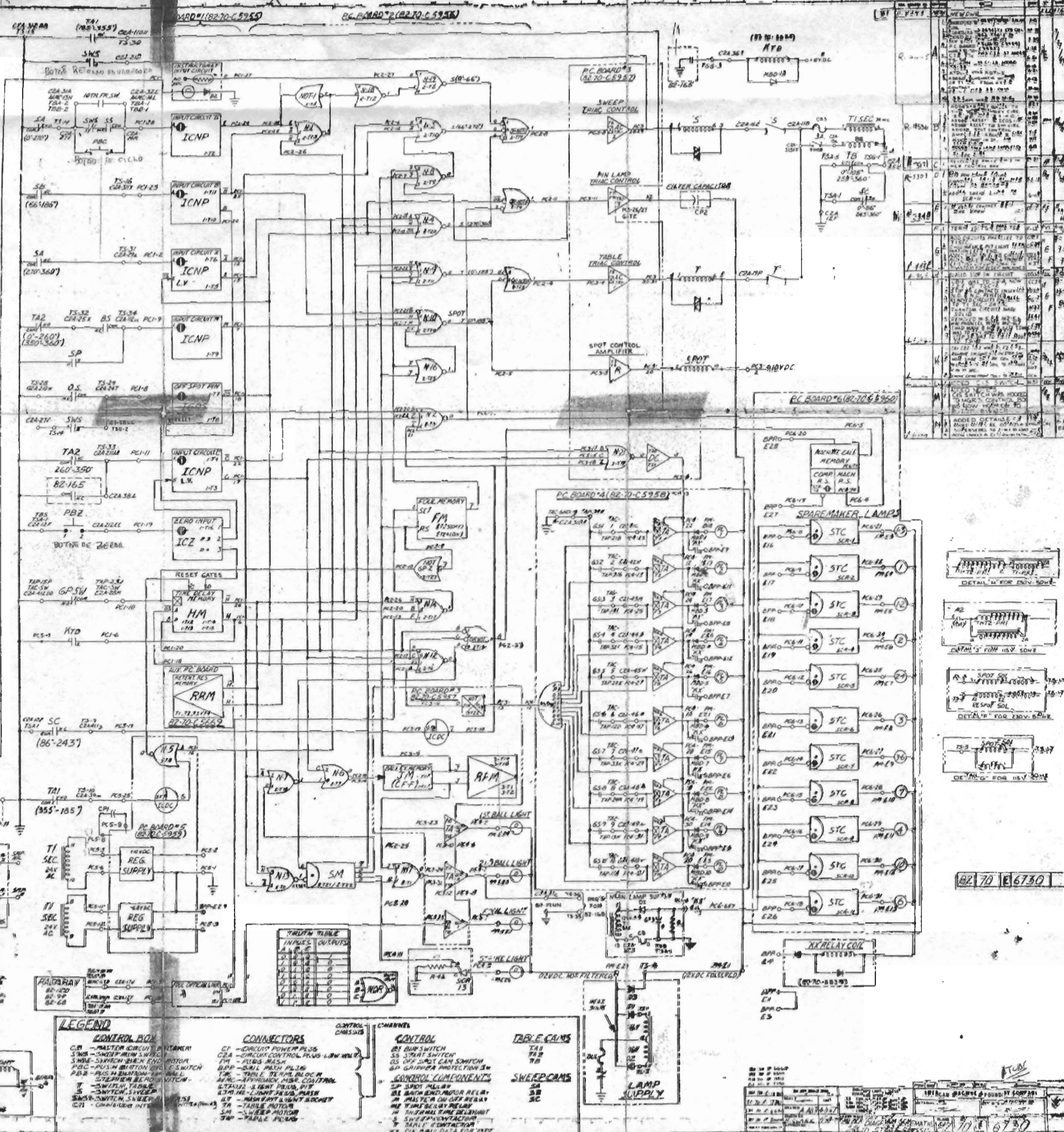
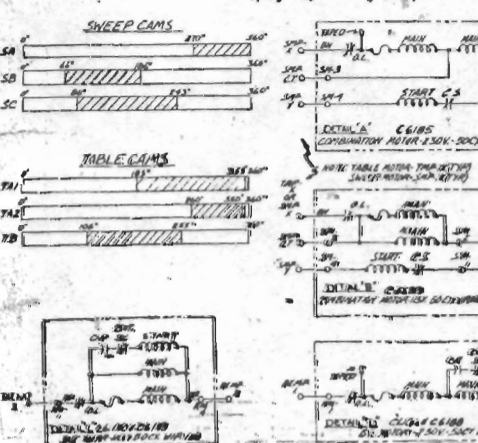


A. MACHINE SHOWN IN ITS ZERO POSITION AWAITING DELIVERY OF A FIRST BALL, NO POWER APPLIED.
B. BIN SWITCH AS SHOWN OPEN, INDICATES THERE IS LESS THAN A FULL SET OF PINS IN THE BIN.
C. HALO LIGHT USED ONLY ON MODEL 59 MARK



INPUTS			OUTPUTS
A	B	C	
0	0	0	1
0	0	1	0
0	1	0	0
0	1	1	0
1	0	0	0
1	0	1	0
1	1	0	0
1	1	1	0

LEGEND

CONNECTORS

CONTROL

TABLE CA/MS

100

•

1

S. 1028 - 1029
S. 1029 - 1030
S. 1030 - 1031

MC - APPROACH, MSR, CONTROL

6P GRIPPER PROTECTION IS
CONTROL COMPONENT

SWEET CAMS

1954

1

10 20 30 40 50 60 70 80 90 100

1

—

7 -3W
5 -3W
SW38-3W

TA - TABLE MOTOR
M - SWEEP MOTOR
AP - TABLE PICKUP

1. THE STATE OF TEXAS
2. THE COUNTY OF DALLAS
3. THE CITY OF DALLAS

doi:10.1017/S002229240000199

[illegible]

1000

DATE	10/10/1941
TIME	10:10
LOCATION	10:10
REMARKS	10:10

